

SOYBEANS

S64-T4X_{BRAND}

RM:
6.4

BROADLY ADAPTED WITH TOP-END YIELD PUNCH

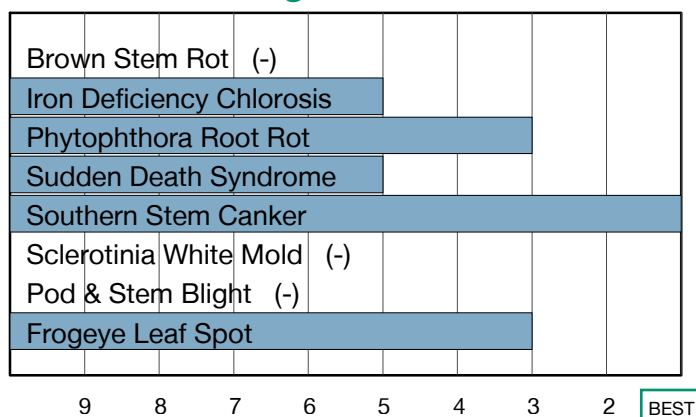
- Excellent performance on medium- to coarse-textured soils
- Performs across all row spacings
- Very good Frogeye Leaf Spot tolerance



Plant Characteristics

Plant Height	Medium-Tall
Canopy/Plant Type	Medium-Bush
Branching	Prolific
Growth Habit	Determinate
Flower Color	White
Pubescence Color	Light Tawny
Pod Color	Brown
Hilum Color	Black
Chloride Sensitivity	Includer

Disease Ratings



Agronomic Traits

Emergence	3
Standability	4
Shatter Tolerance	-
Green Stem	-
Estimated Seed Size	Medium
% Protein at 13% mst.	37.1
% Oil at 13% mst.	20.0
Narrow Rows	3
Wide Rows	2

Adaptation to Soil Types

Drought Prone	Good
High pH*	Poor
Highly Productive	Good
Moderate/Variable Environments	Good
Poorly Drained	Fair

Diseases and Pests

Phytophthora Root Rot (PRR) Source	S
Soybean Cyst Nematode (SCN) Races	R3
(SCN) Source	PI88788
Root Knot Nematode (RKN) Incognita	6

For more information or to view product performance data: www.nksoybeans.com (800) 258-0521



syngenta.

Performance assessments are based upon results or analysis of public information, field observations and/or internal Syngenta evaluations. Product performance assumes disease presence.

©2020 Syngenta. Under federal and local laws, only dicamba-containing herbicides registered for use on dicamba-tolerant varieties may be applied. See product labels for details and tank mix partners. NK® Soybean varieties are protected under granted or pending U.S. variety patents and other intellectual property rights, regardless of the trait(s) within the seed. The Roundup Ready 2 Yield® and Roundup Ready 2 Xtend® traits may be protected under numerous United States patents. It is unlawful to save soybeans containing these traits for planting or transfer to others for use as a planting seed. Roundup Ready 2 Yield® and Roundup Ready 2 Xtend® are trademarks used under license from Monsanto Technology LLC. The trademarks or service marks displayed or otherwise used herein are the property of a Syngenta Group Company. All other trademarks are the property of their respective owners.

1-9 Scale: 1 = Best, 9 = Worst, (-) = Not Available, NA = Not Applicable.

Adaptation to Soil Types: Best > Good > Fair > Poor; (-) = Not Available.

* Represents an assessment of stand establishment, chlorosis severity and yield performance

Published June 17, 2020. For use until April 30, 2021.