

SOYBEANS



NK52-D6E3 BRAND

RM:
5.2



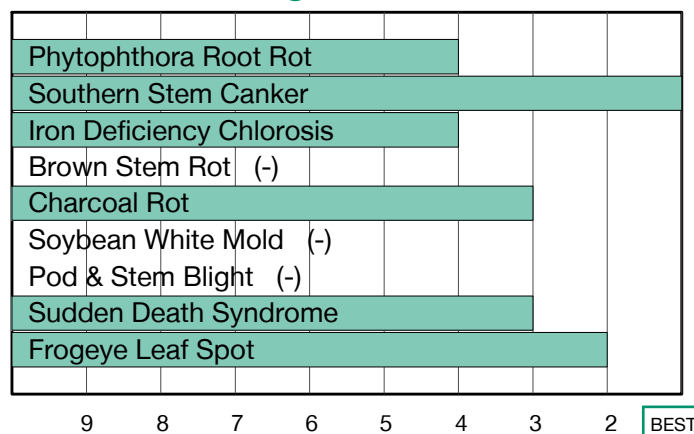
Fantastic Yield Potential with RKN Tolerance and the Excluder Gene

- Unique genetics for all maturity group 5 Enlist E3 soybean acres
- Broadly adapted to any soil type and drainage class
- Rugged plant type that delivers exceptional stress tolerance

Plant Characteristics

Plant Height	Medium-Tall
Canopy/Plant Type	Medium-Bush
Branching	Moderate
Growth Habit	Indeterminate
Flower Color	White
Pubescence Color	Gray
Pod Color	Brown
Hilum Color	Buff
Chloride Sensitivity	Excluder

Disease Ratings



Agronomic Traits

Emergence	2
Standability	4
Shatter Tolerance	-
Green Stem	4
Estimated Seed Size	Small
% Protein at 13% mst.	-
% Oil at 13% mst.	-
Narrow Rows	Fair
Wide Rows	Best
Metribuzin Response	Good
Sulfentrazone Response	Best

Diseases and Pests

Phytophthora Root Rot (PRR) Source	Rps1c
Soybean Cyst Nematode (SCN) Races	R3
(SCN) Source	PI88788
Root Knot Nematode (RKN) Incognita	3

Adaptation to Soil Types

Drought Prone	Best
High pH*	Fair
Highly Productive	Good
Moderate/Variable Environments	Best
Poorly Drained	Best

For more information or to view product performance data: nkseeds.com @NKSeeds

1-9 Scale: 1 = Best, 9 = Worst, (-) = Not Available, NA = Not Applicable.
Adaptation and Responses: Best > Good > Fair > Poor.
R = Resistant, S = Susceptible.

* Represents an assessment of stand establishment, chlorosis severity and yield performance

Ratings are based on interpretation of statistically analyzed results of studies conducted by Syngenta and may change as additional data are gathered.

© 2025 Syngenta. Important: Always read and follow label and bag tag instructions; only those labeled as tolerant to glufosinate may be sprayed with glufosinate ammonium-based herbicides. NK® soybean varieties are protected under granted or pending U.S. variety patents and other intellectual property rights, regardless of the trait(s) within the seed. The Enlist E3® soybean and LibertyLink® traits may be protected under numerous United States patents. It is unlawful to save soybeans containing these traits for planting or transfer to others for use as a planting seed. Only 2,4-D choline formulations with Colex-D® Technology are approved for use with Enlist E3® soybeans. Enlist E3® soybean technology is jointly developed with Corteva Agriscience LLC and M.S. Technologies, LLC. The Enlist trait and Enlist Weed Control System are technologies owned and developed by Corteva Agriscience LLC. Colex-D®, Enlist® and Enlist E3® are registered trademarks of Corteva Agriscience LLC. LibertyLink®, Liberty® and the Water Droplet logo are registered trademarks of BASF. Trademarks are the property of their respective owners.



Seed products with the LibertyLink® (LL) trait are resistant to the herbicide glufosinate ammonium, an alternative to glyphosate in corn and soybeans, and combine high-yielding genetics with the powerful, non-selective, postemergent weed control of Liberty® herbicide for optimum yield and excellent weed control.