

SOYBEANS



NK47-G5E3S^{BRAND}

RM:
4.7

Exciting STS Tolerant Variety with the Excluder Gene

- Excels on medium to coarse textured soils
- Can be placed on dryland acres with a great response to irrigation
- Avoid placement on poorly drained soils

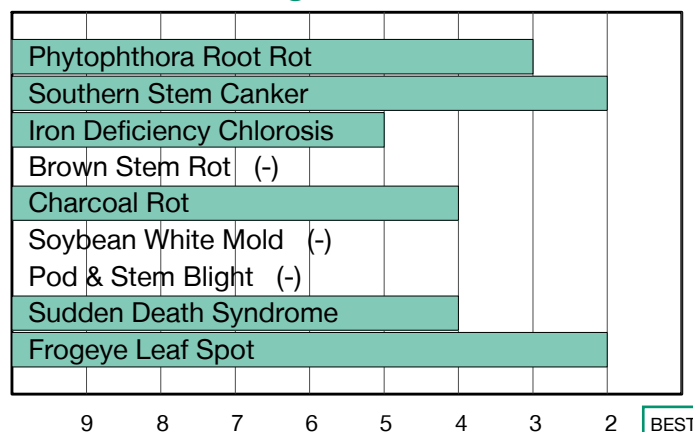


STS[®]

Plant Characteristics

Plant Height	Tall
Canopy/Plant Type	Medium-Bush
Branching	Moderate
Growth Habit	Indeterminate
Flower Color	White
Pubescence Color	Gray
Pod Color	Tan
Hilum Color	Buff
Chloride Sensitivity	Excluder

Disease Ratings



Agronomic Traits

Emergence	3
Standability	4
Shatter Tolerance	-
Green Stem	2
Estimated Seed Size	Small
% Protein at 13% mst.	-
% Oil at 13% mst.	-
Narrow Rows	Fair
Wide Rows	Best
Metribuzin Response	Best
Sulfentrazone Response	Best

Diseases and Pests

Phytophthora Root Rot (PRR) Source	Rps1k
Soybean Cyst Nematode (SCN) Races	MR3
(SCN) Source	PI88788
Root Knot Nematode (RKN) Incognita	4

Adaptation to Soil Types

Drought Prone	Good
High pH*	Poor
Highly Productive	Best
Moderate/Variable Environments	Good
Poorly Drained	Good

For more information or to view product performance data: nkseeds.com @NKSeeds

1-9 Scale: 1 = Best, 9 = Worst, (-) = Not Available, NA = Not Applicable.

Adaptation and Responses: Best > Good > Fair > Poor.

R = Resistant, S = Susceptible.

* Represents an assessment of stand establishment, chlorosis severity and yield performance.

Ratings are based on interpretation of statistically analyzed results of studies conducted by Syngenta and may change as additional data are gathered.

© 2026 Syngenta. **Important: Always read and follow label and bag tag instructions; only those labeled as tolerant to glufosinate may be sprayed with glufosinate ammonium-based herbicides.** NK[®] soybean varieties are protected under granted or pending U.S. variety patents and other intellectual property rights, regardless of the trait(s) within the seed. The Enlist E3[®] soybean and LibertyLink[®] traits may be protected under numerous United States patents. It is unlawful to save soybeans containing these traits for planting or transfer to others for use as a planting seed. Only 2,4-D choline formulations with Colex-D[®] Technology are approved for use with Enlist E3[®] soybeans. Enlist E3[®] soybean technology is jointly developed with Corteva Agriscience LLC and M.S. Technologies, LLC. The Enlist trait and Enlist Weed Control System are technologies owned and developed by Corteva Agriscience LLC. Colex-D[®], Enlist[®], Enlist E3[®] and STS[®] are registered trademarks of Corteva Agriscience LLC. LibertyLink[®], Liberty[®] and the Water Droplet logo are registered trademarks of BASF. Trademarks are the property of their respective owners.

LIBERTY LINK[®] Seed products with the LibertyLink[®] (LL) trait are resistant to the herbicide glufosinate ammonium, an alternative to glyphosate in corn and soybeans, and combine high-yielding genetics with the powerful, non-selective, postemergent weed control of Liberty[®] herbicide for optimum yield and excellent weed control.