

Phytophthora Control

A season-long prevention program for orchard health

Quick Facts

Caused by: Oomycetes (water molds) that attack roots and the crown

Name means: “Plant-destroyer”

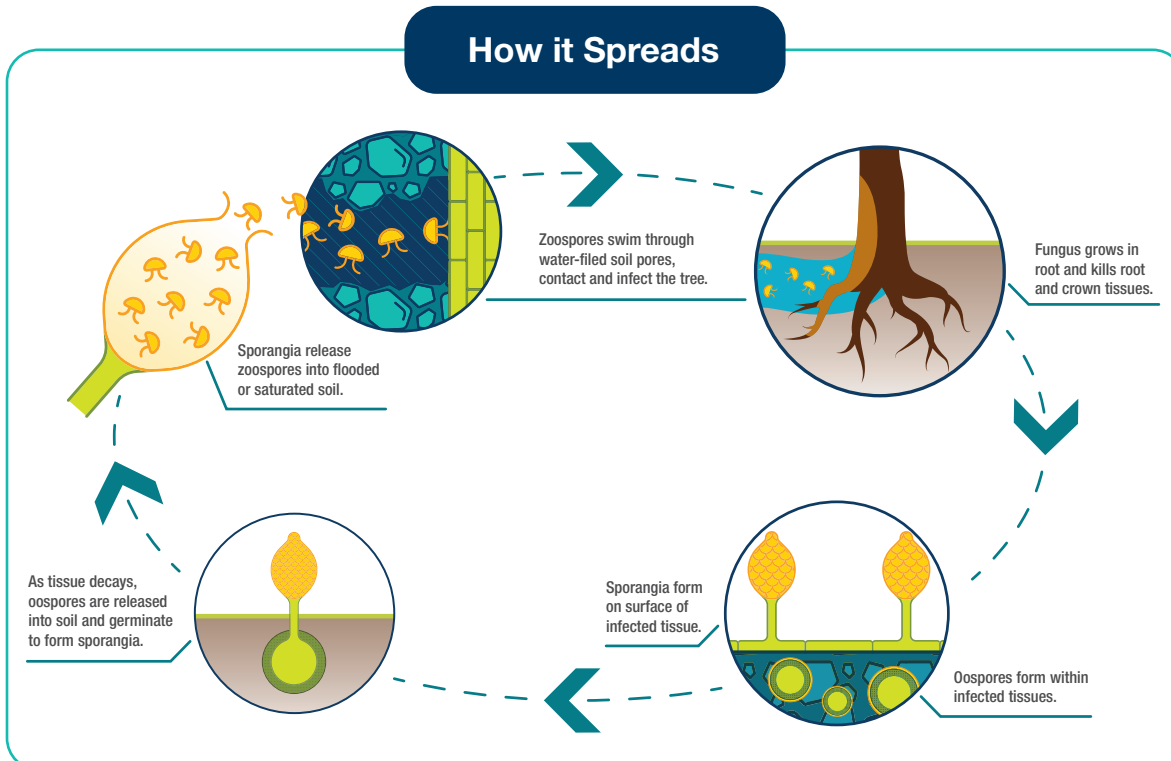
Found in: California soils and can build damaging levels under favorable conditions

Why it matters: Infections reduce water and nutrient uptake, causing tree stress and even death

Key symptoms

- Uneven field growth patterns
- Upward leaf cupping with marginal burn
- Sudden tree collapse during heat waves
- Root rot and crown rot
- Gumming at crown level

How it Spreads



Protect Roots All Season

Combine strong cultural practices—good drainage and smart irrigation—with a targeted fungicide rotation timed to root growth to protect the root zone, reduce losses and maintain tree performance through heat stress.

Irrigation Program

- **Orondis®** fungicide 6.4 fl oz/acre
- **Timing:** Middle 1/3 of irrigation set
- **Post-injection:** 6–8 hours irrigation to move material through the top ~18 inches of soil
- **Goal:** Protect new roots for nutrient and water uptake

Rotation Partner

- **Ridomil Gold® SL** fungicide 1 pt/acre
- **Timing:** Last 1/3 of irrigation set
- **Use:** Rotate after two Orondis applications to help manage resistance

Maximize *Phytophthora* Control

1

Time applications to spring root flush and high-risk irrigation periods

2

Rotate modes of action to reduce resistance risk

3

Manage irrigation to avoid saturated conditions; improve drainage where needed

4

Sanitize equipment and limit movement of infested soil

Impact and ROI Potential

Protecting roots early helps maintain water and nutrient uptake throughout the season, reducing stress-related losses and supporting long-term orchard productivity.

Replant costs:



\$70

1-year-old almond tree



\$150

3-year-old almond tree

Phytophthora cost:



≈ **cost of 1** replanted tree/acre

Reach out to your local Syngenta representative to learn more about Orondis.



Scan to see performance data results.



syngenta®

*Calculated with UC Davis Tree and Vine Loss Calculator "Almonds – San Joaquin Valley South" (<https://coststudies.ucdavis.edu/tree-and-vine-loss-calculators>) using "With Replanting." Values entered: New tree cost \$10.00, crop value \$2.50/lb, 140 trees per acre.

All photos are either the property of Syngenta or are used with permission.

© 2026 Syngenta. **Important: Always read and follow label instructions. Some products may not be registered for sale or use in all states or counties. Please check with your local extension service to ensure registration status.** Orondis®, Ridomil Gold®, the Alliance Frame, the Purpose Icon and the Syngenta logo are trademarks of a Syngenta Group Company.