

The Lodging Management Choice for High-yielding Cereals

2013 Field Photos and Yield Results Mo., Ill., Ind., Ky.



syngenta®

Classification: Public

©2013 Syngenta. **Important: Always read and follow label instructions. Some crop protection products may not be registered for sale or use in all states or counties. Please check with your local extension service to ensure registration status.** Palisade®, the Alliance frame, the Purpose icon and the Syngenta logo are trademarks of a Syngenta Group Company.

TM

About Palisade EC

- Palisade® EC plant growth regulator (PGR) shortens the internodes and strengthens the stem of wheat and barley plants
- Shorter plants mean a lower center of gravity, which improves crop standability and mitigates risk from adverse weather

Increased Stem Thickness



Untreated

Palisade EC

Risk Management Tool

- Palisade EC helps protect cereal growers' valuable crop investments in seed, fertilizer and other inputs, to maximize yield and profit potential
- Flattened crops mean higher cost or lower premiums
 - Slower combining time = higher cost
 - Increased drying cost
 - Yield losses
 - Quality discounts
- Palisade EC protects the profitability and marketability of cereal crops



untreated



Palisade EC

Source: Syngenta Trial



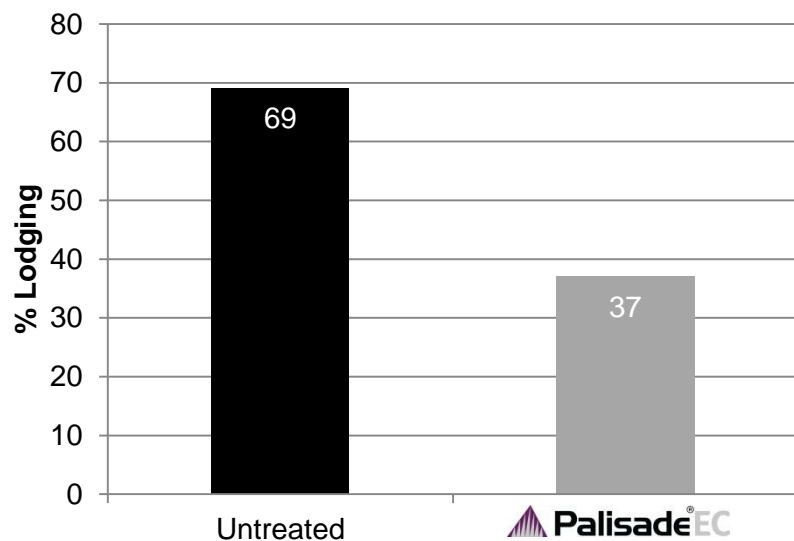
Palisade[®]EC

syngenta[®]

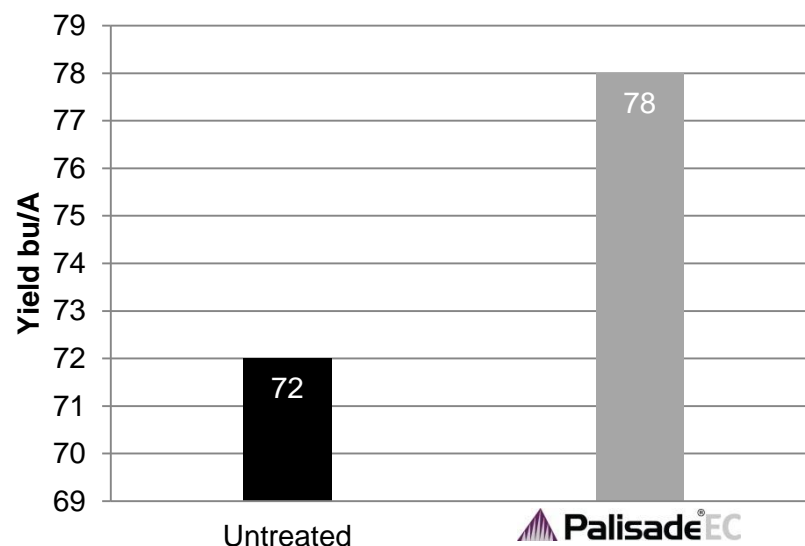
Significantly Decreases Lodging

- Lodging can reduce yield by 10 to 40 percent
- Lodging can be an issue in fields where higher N fertilization has been applied to improve yield potential, or in fields with high residual N carryover
- Palisade EC can protect yield in lodging-prone areas. Results show an average increase of 5-6 bu/A in high lodging situations.

Better Standability



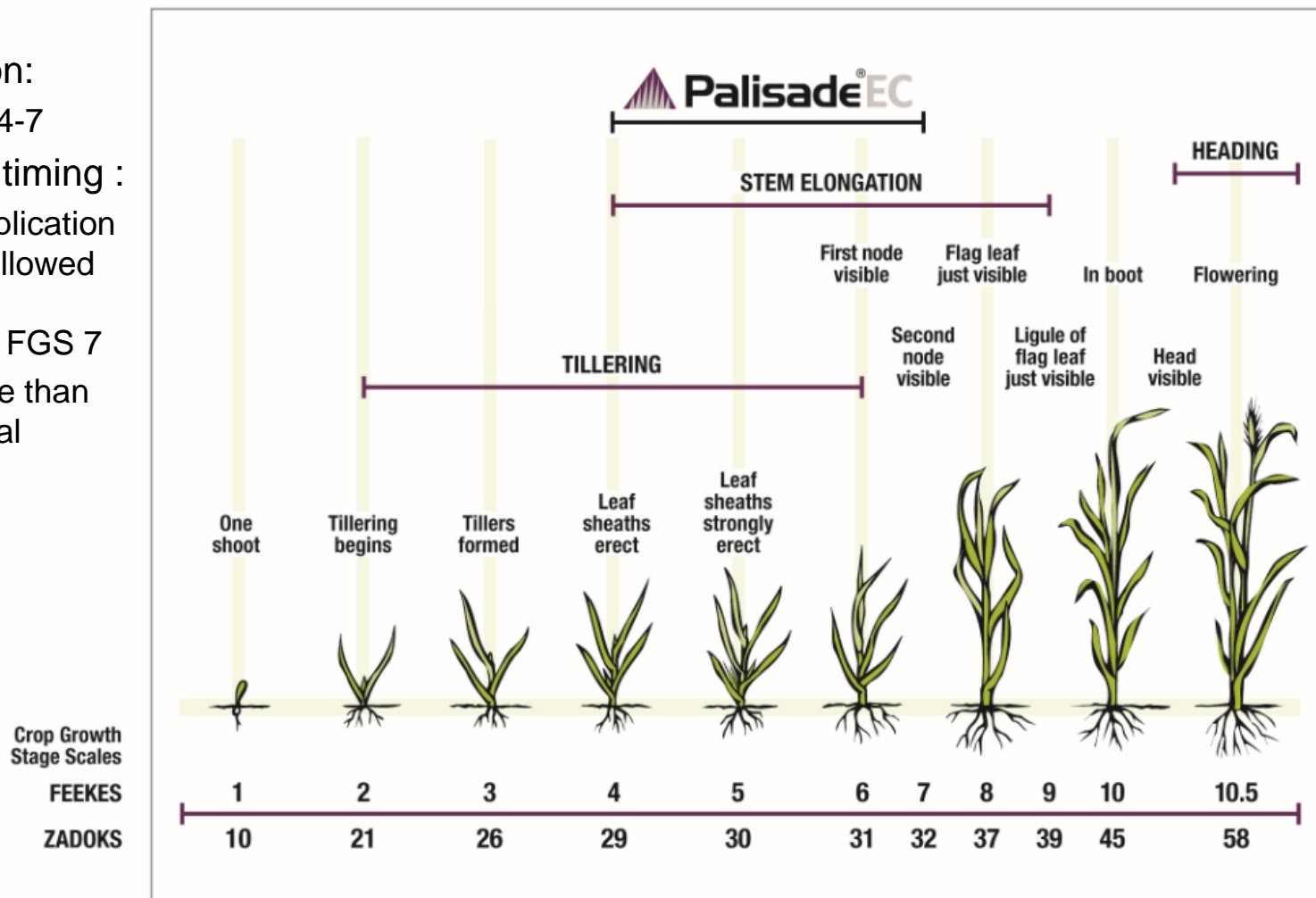
Maximized Yield Potential



Application rates: 0.09-0.114 lb ai/A (equivalent to 12-14.4 oz/A of Palisade EC). Number of trials = 11. Trials conducted in IL, KY, MD, MN, NY and OR.

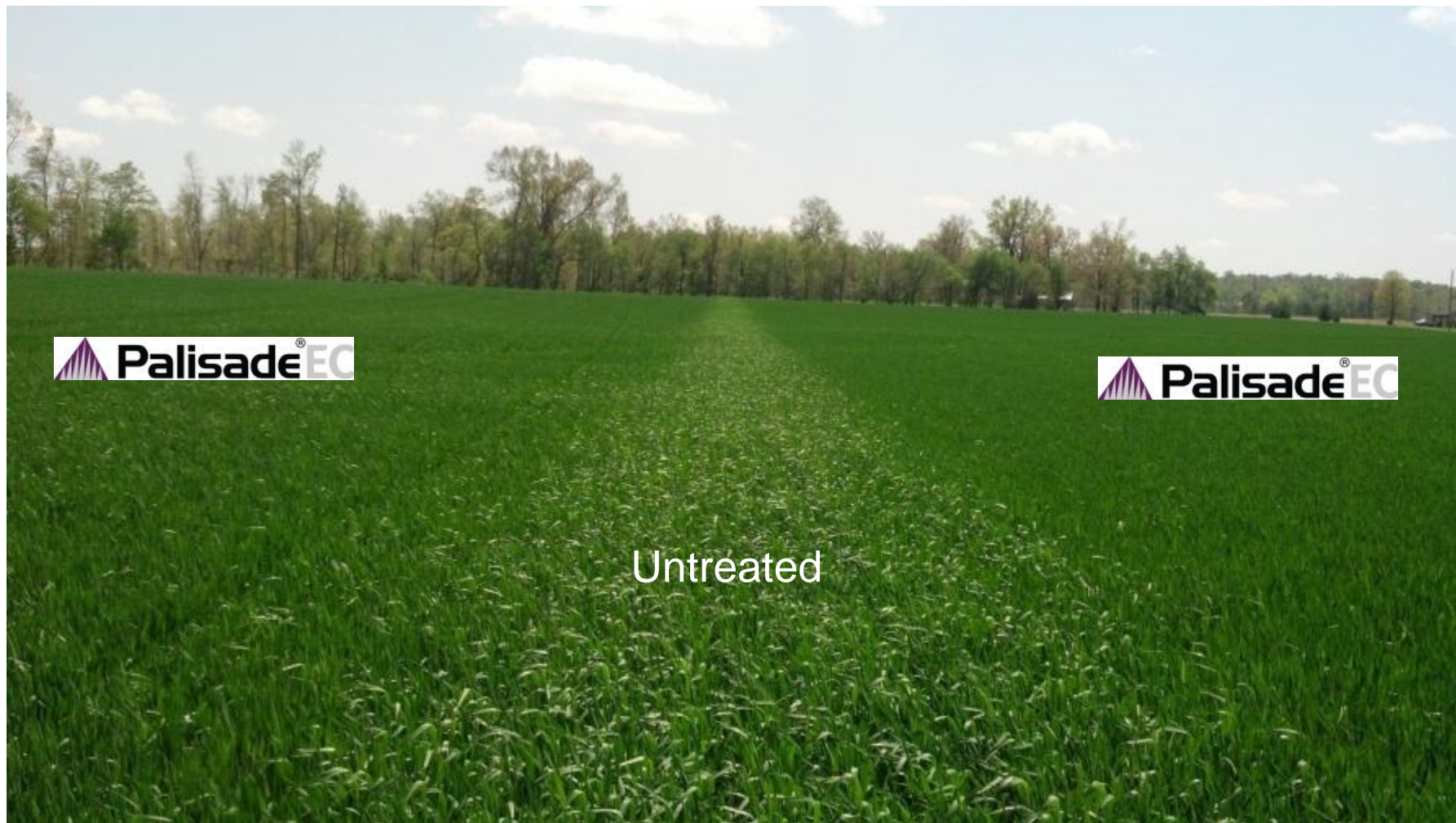
Optimum Application Window in Winter Wheat

- Single application:
 - Timing: FGS 4-7
- Split application timing :
 - Apply first application at FGS 4-5 followed by a second application at FGS 7
 - Apply no more than 14.4 oz./A total



Palisade EC Trial: Treated vs. Untreated

Davies County, Kentucky



Classification: Public

All photos are the property of Syngenta unless otherwise noted.

©2013 Syngenta. **Important: Always read and follow label instructions. Some crop protection products may not be registered for sale or use in all states or counties. Please check with your local extension service to ensure registration status.** Palisade[®], the Alliance frame, the Purpose icon and the Syngenta logo are trademarks of a Syngenta Group Company.

 **Palisade[®]EC**

syngenta[®]

Palisade EC Trial: Treated vs. Untreated Gibson County, Indiana

 Palisade[®]EC

Untreated



Classification: Public

All photos are the property of Syngenta unless otherwise noted.

©2013 Syngenta. **Important: Always read and follow label instructions. Some crop protection products may not be registered for sale or use in all states or counties. Please check with your local extension service to ensure registration status.** Palisade[®], the Alliance frame, the Purpose icon and the Syngenta logo are trademarks of a Syngenta Group Company.



Palisade[®]EC

syngenta[®]

Palisade EC Trial: Treated vs. Untreated

Saline County, Illinois



 **Palisade[®]EC**



Untreated

Palisade EC Trial: Treated vs. Untreated Franklin County, Illinois



 **Palisade[®]EC**



Untreated

Classification: Public

All photos are the property of Syngenta unless otherwise noted.

©2013 Syngenta. **Important: Always read and follow label instructions. Some crop protection products may not be registered for sale or use in all states or counties. Please check with your local extension service to ensure registration status.** Palisade[®], the Alliance frame, the Purpose icon and the Syngenta logo are trademarks of a Syngenta Group Company.

 **Palisade[®]EC**

syngenta[®]

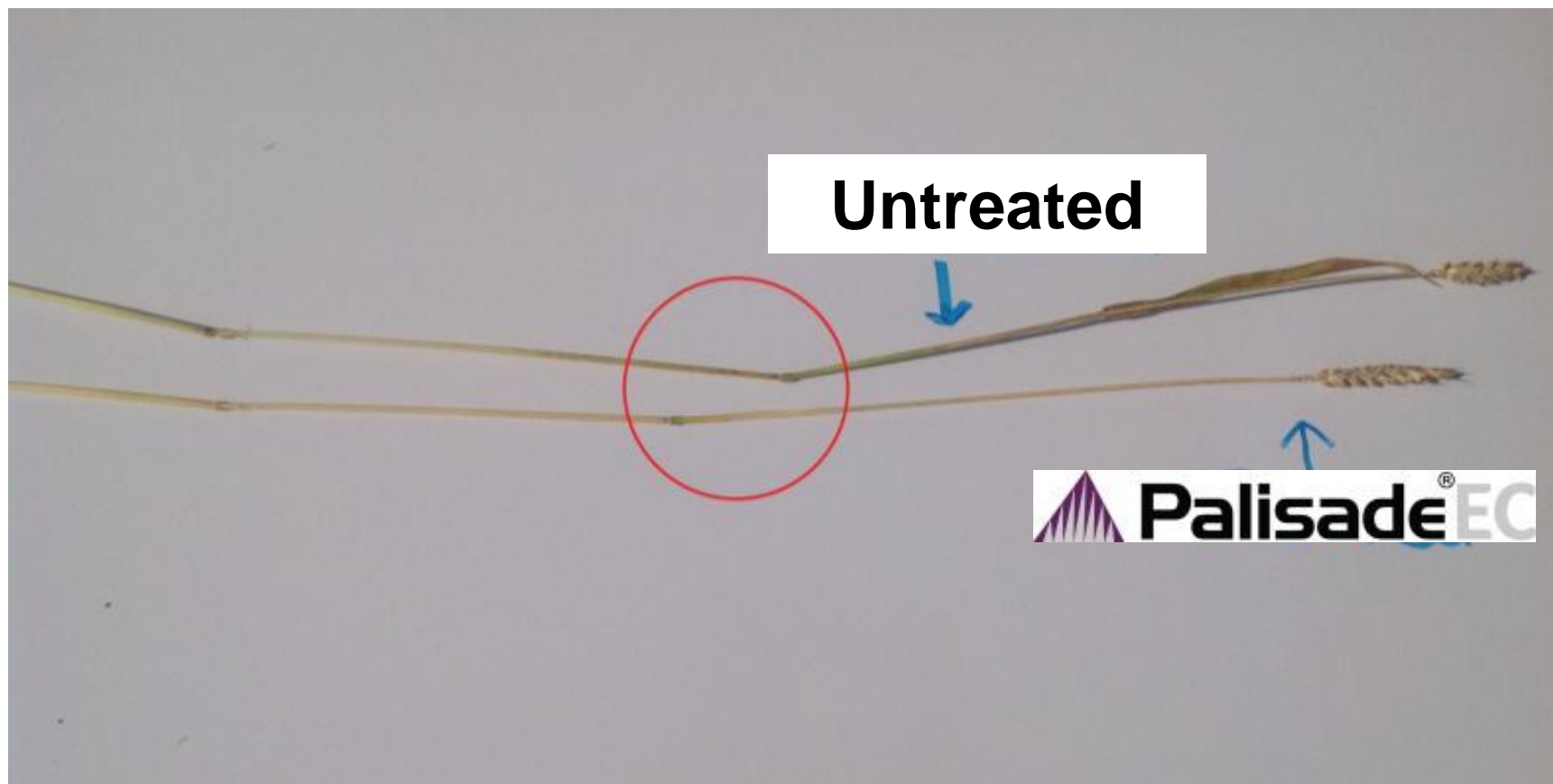
Palisade EC Trial: Treated vs. Untreated Clinton County, Illinois



Untreated

 **Palisade[®]EC**

Demonstration of Shortened Nodes: Palisade EC vs. Untreated Clinton County, Illinois



Harvest Report

Harvest Report: Maystown, IL – Monroe County

Harvest Date: June 21, 2013

Variety: Elder

Treatment:	Rate	Product	Cost
	10 oz	Palisade EC	
	10.5 oz	Quilt Xcel®	
	45 Units	Nitrogen	

\$67.00

Selling Price: \$ 6.96

Incremental Bushels: 16.77 bu / acre

Income on Incremental Bushels: \$ 116.72 / acre

Investment: \$ 67.00 / acre

Return on Investment : \$ 49.72 / acre

Harvest Data

	Test Weight	Row Length	Harvested Rows	Harvested Feet	Harvest Weight	Moisture	Yield
Treated	61.5	980	32	980	2830	12.8	105.67
Untreated	60.7	920	32	920	2230	12.6	88.90

Classification: Public

©2013 Syngenta. **Important:** Always read and follow label instructions. Some crop protection products may not be registered for sale or use in all states or counties. Please check with your local extension service to ensure registration status. Palisade®, Quilt Xcel®, the Alliance frame, the Purpose icon and the Syngenta logo are trademarks of a Syngenta Group Company.



Palisade[®]EC

syngenta[®]

Harvest Report

Harvest Report: Jackson County

Harvest Date: June 29, 2013

Variety: Elder

Treatment: **Rate**
10 oz

Product
Palisade EC
32% Nitrogen

9.7 Bushel
Yield
Increase

Harvest Data

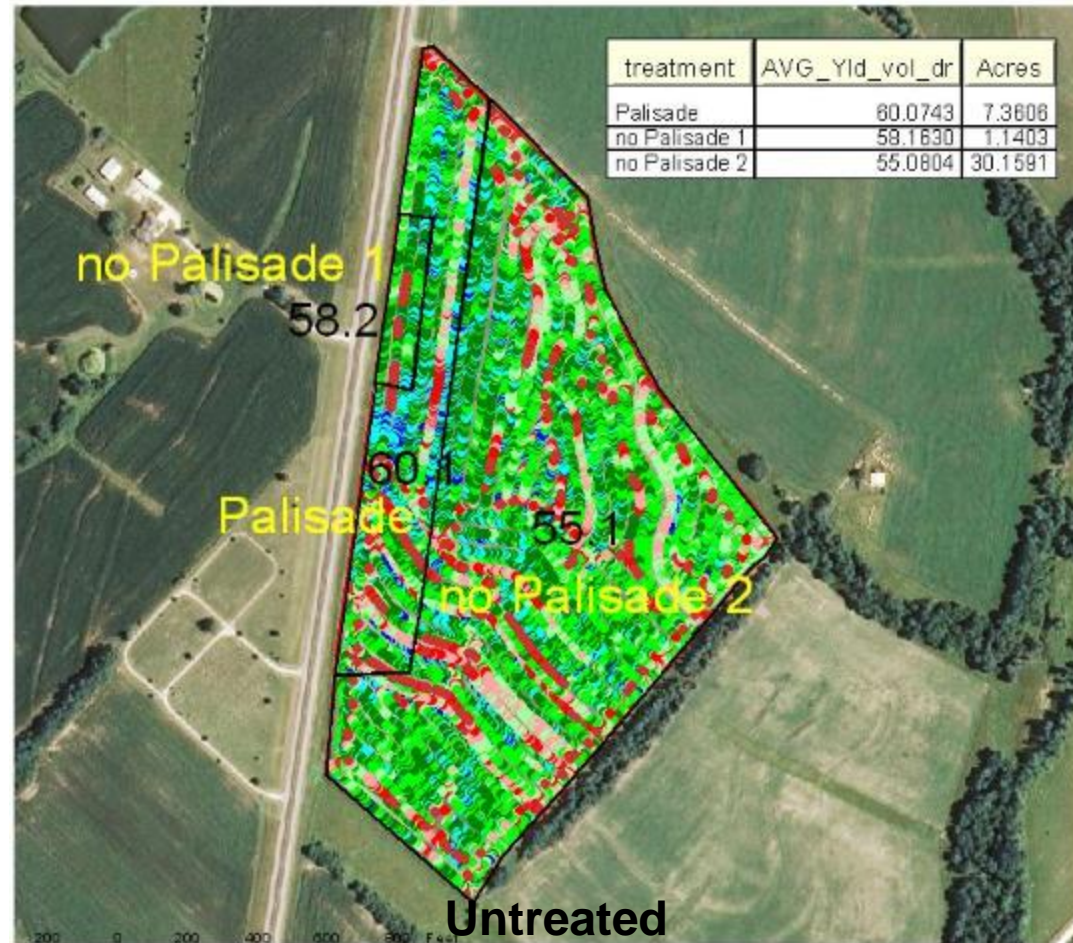
	Test Weight	Row Length	Harvested Rows	Harvested Feet	Harvest Weight	Moisture	Yield
Treated	58.3	337	56	337	1410	12.8	87.5
Untreated	57	337	56	337	1250	12.5	77.8



Palisade EC Trial: Treated vs. Untreated

Pike County, Missouri

	Yield	Acres
Palisade EC	60.074	7.3606
Untreated 1	58.163	1.1403
Untreated 2	55.08	30.159



Palisade[®]EC

syngenta[®]

For more information, visit www.cereals.farmassist.com

Classification: Public

All photos are the property of Syngenta unless otherwise noted.

©2013 Syngenta. **Important: Always read and follow label instructions. Some crop protection products may not be registered for sale or use in all states or counties. Please check with your local extension service to ensure registration status.**

Palisade®, Quilt Xcel®, the Alliance frame, the Purpose icon and the Syngenta logo are trademarks of a Syngenta Group Company.

